

Loan rates at  
an all-time  
low!

# TERI On Track

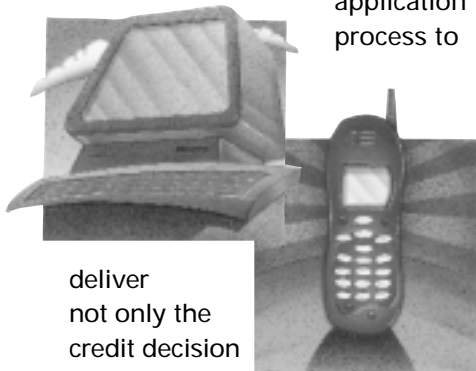
Winter Edition 2001

A Newsletter for Providers of Education Assistance

## TERI Announces New Program Initiatives for 2002-03

### ✓ Credit decision time will be shortened

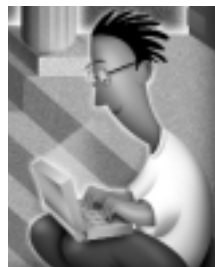
Applicants will get a credit decision, via e-mail, within minutes of submitting an application—by web or phone. We are building on our already successful online application process to



deliver not only the credit decision quickly, but will also keep the student and financial aid office updated throughout the entire process. Students will be notified via email of their credit decision and given the ability to check status online. Unlike many companies who instantly decision a loan on the internet, a credit analyst provides the required personal attention that some students require. That ensures the highest approval rate possible and the correct credit decision.

### ✓ TERI Education Loans has added a save feature to the web application making the process even easier

Students are able to complete a portion of the application, save the data and come back later (perhaps with co-borrower information) to finish the form. Password protection assures complete confidentiality and our 128-bit encryption further strengthens data integrity. This high level of protection also protects the status check and certification sections of our web site.



### ✓ Promissory notes will be downloadable and printable in 2002-2003

Instead of waiting for a promissory note to be mailed, students will be able to download and print a note. That saves time and hassles. Once printed, the student will review and sign the document, returning only the necessary pages to TERI. The student retains the important promissory note and is able to refer to it when loans go into repayment. For those less computer savvy, promissory notes will be available via the mail also.

### Online Certification — Makes loan certification easy!

- ✓ Several hundred schools have signed up for Online Certification.
- ✓ Make loan certification easy at your office by signing-up today.
- ✓ Simply call 800-TERI-FAO and one of our representatives will assist.

### TERI Education Loans rates have never been lower!

Loan interest rates are currently 4.5% for many of our products. What does that mean to you and your students? Lower payments and a significantly lower finance charge. And tax deductibility makes costs even lower. Frankly, borrowing for an education has always been a good investment and with rates as low as they are today there has never been a better time to borrow.

## Higher Education Information Center (HEIC) Grows...

Since its founding in 1985, the Higher Education Information Center has provided very needed services to a significant number of students in the city of Boston and surrounding communities. All of its services, i.e., career counseling, college selection, financial aid and scholarship searches, as well as its outreach programs to community and civic organizations, are provided free of charge. Funding to support programs come from a number of sources, including a number of federal grants (most of the federal grants support the early awareness programs operated in the Boston Public Schools). There are many more outreach requests that can't be met due to staff



Arturo Iriarte

Amy Allison

shortage, according to Executive Director Arturo Iriarte.

While HEIC has served over 2 million youth and adults since its founding 16 years ago, many more could benefit from its college planning services.

While many are aware of the services provided at the Center at the Boston Public Library, HEIC is, in fact, more than the college and career counseling services at BPL.

It provides a continuum of services beginning with intensive work with middle and high school students and then moving on to services at the Boston Public Library. HEIC is confident that its new full-time development and marketing coordinator, Amy Allison, will help strengthen its visibility and reach more students who need help in getting into and succeeding in college.

An annual fundraising evening is being planned that will help attract new friends to HEIC. In addition, an event is planned to thank the many individuals, corporations and businesses that have graciously supported HEIC activities and programs throughout the past 16 years.

## Pathways to College Network Update

The Pathways to College Network, a major national initiative which TERI administers, is making considerable progress toward reaching its mission of focusing research-based knowledge and resources on improving college preparation, access, and success for under-served populations.



PATHWAYS  
TO COLLEGE  
NETWORK

This unique collaboration of 28 national organizations, educational institutions, foundations, and federal agencies stresses that an effective national effort to strengthen under-served students' path to college must build on the vast number of successful programs and interventions, and link them to policy and practice.

One essential role of Pathways is to function as a clearinghouse for practitioners, stakeholders, middle and high school principals, and education policymakers on information about pre-college outreach programs, and students' preparation for, access to, and success in college. Research findings and outcomes will be disseminated through the Pathways Clearinghouse, which is staffed by a user services specialist who will assist practitioners, community leaders, and policymakers with locating and incorporating relevant practices and policies into their work. The Clearinghouse is affiliated with the Educational Resources Information Center (ERIC) through the ERIC Clearinghouse, and it functions as an adjunct clearing-

house on educational opportunity. The Clearinghouse is web-based and will feature a number of services, such as digest publications and bibliographies, fact sheets, reference and referral services, user workshops, frequently asked questions, email distribution information updates, and other publications and activities. Please visit the Pathways to College Network Clearinghouse web site at <http://www.pathwaystocollege.net/clearinghouse>.



**Interest Rates**  
(as of 12/1/01)

TERI Rate 4.50%  
[Prime - .50%]